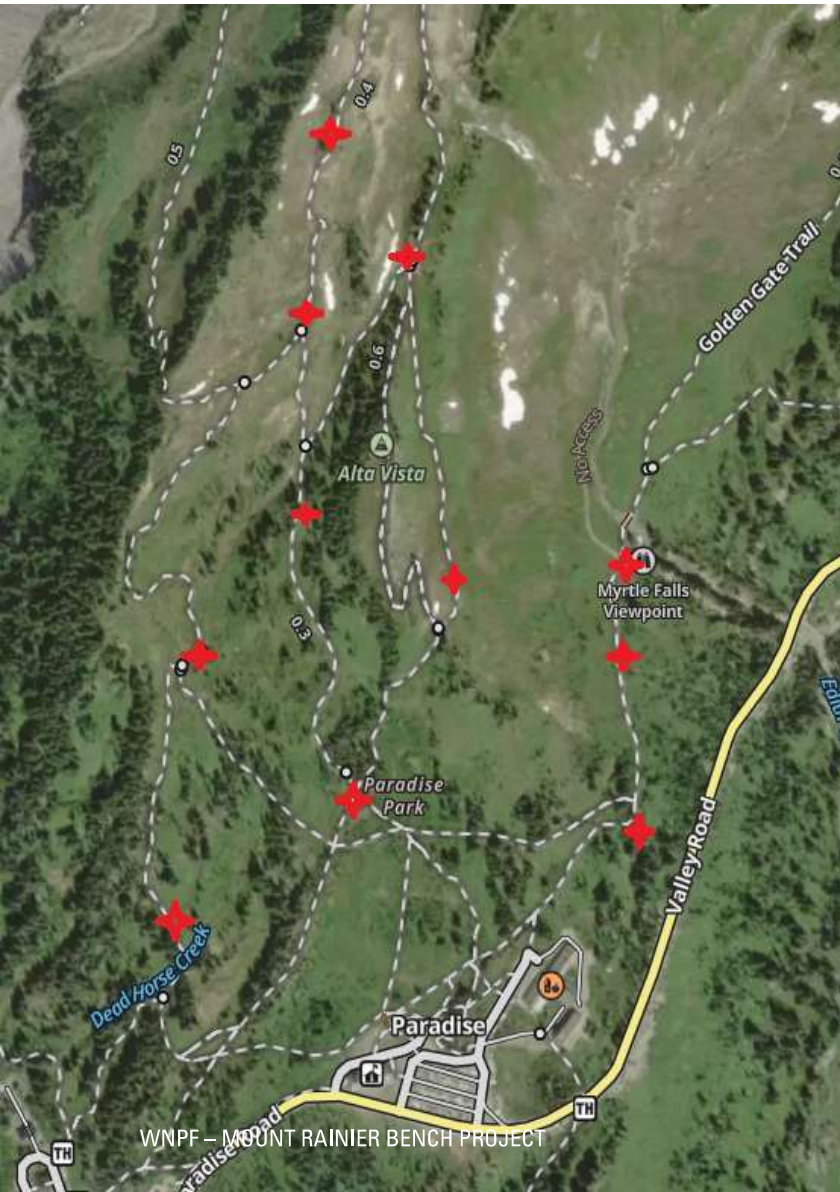

WASHINGTON'S
NATIONAL PARK
FUND
*MOUNT RAINIER
BENCH PROJECT*

Executed By:
Longmire & Ohanapecosh Trail Crews



Skyline Trail



BENCH LOCATIONS

20 Benches Built and Installed:

- Deadhorse Trail (4)
- Skyline Trail (13)
- Alta Vista Trail (3)

BACKGROUND

Benches along trails in the Paradise area have served as welcomed break spots for the many different user groups that visit the subalpine meadows. Providing break spots with benches helps prevent undesirable meadow impacts that would develop when folks seek their own favorable break spot. This project's goal was to enhance the visitor experience by replacing deteriorated benches throughout the Paradise area.



Material gathering and processing at Kautz Bone Yard

SKYLINE TRAIL

DANCE FLOOR

Six benches were placed at the large paved trail junction along the Skyline Trail. Approximately 1/2 mile from the trailhead.



SKYLINE TRAIL

MYRTLE FALLS

A bench was added to the collection at Myrtle Falls. This is a welcomed addition for this highly visited destination.



SKYLINE TRAIL

ROUTE TO MYRTLE FALLS

Two benches were replaced along the grade leading up to Myrtle Falls, providing reprieve for the wide-ranging user group that access the falls.



SKYLINE TRAIL

ROUTE TO MYRTLE FALLS

Two benches were replaced at a very shady spot approximately half-way between Myrtle Falls and the Skyline Trailhead.



SKYLINE TRAIL

LOWER ALTA VISTA JUNCTION

A bench was replaced at the lower Alta Vista Junction. This bench provides reprieve from the steep grade leading from the trailhead.



SKYLINE TRAIL

*WELCOME TO THE
WONDERLAND*

A bench was replaced at the crest of the initial climb from the trailhead as you head towards Panorama Point. An ideal location for rest.



DEADHORSE TRAIL

*WEST PARADISE, LESS
CROWDS*

A bench was replaced in the lower stretches of the Deadhorse Trail.



DEADHORSE TRAIL

*ABOVE WATERFALL TRAIL
JUNCTION*

A bench was replaced at an idyllic spot for rest on the less crowded Deadhorse Trail.



DEADHORSE TRAIL

SKYLINE CONNECTOR

JUNCTION

A bench was replaced at a gorgeous trail junction. Allowing for rest as folks get their bearings.



DEADHORSE TRAIL

REST UP HIGH

A bench was replaced along the Deadhorse Trail at a very popular shaded break spot. This spot is also used as a staging area when vegetation crews and trail crews have project work in the area.



ALTA VISTA TRAIL

*EXPANSIVE VIEWS OF
PARADISE*

Three benches were replaced at a very scenic viewpoint at Alta Vista. Providing for reprieve from the rapid elevation gain it takes to get here.





SUMMARY

The FY23 WNPf Mount Rainier Bench Project was a great success. Thanks to the generous donors of the WNPf, trail crews at MORA were able to build 20 rustic benches for visitor enjoyment in the Paradise area. This was a very rewarding and meaningful project for the crews. It provided opportunity to build woodworking skills directly transferrable to bridge building, provided work to fill odd hours, and provided a sense of accomplishment.

THANK YOU, WNPF!

Craig Frohbieter – MORA Trails Supervisor (South)
| craig_frohbieter@nps.gov | 360-569-6633

WNPF – MOUNT RAINIER BENCH PROJECT



9/25/2023